



Vertical Multistage Pumps



KI Series

High quality pumps with compact construction and high efficiency with AISI304 grade stainless steel on all water contact surfaces. Features in-line (on the same axis) inlet-outlet connections.

Fields of Use

- Pressurized water supply in residential and commercial buildings
- Garden irrigation systems
- Agricultural irrigation systems
- Industrial applications
- Water treatment systems
- Clean water transfer

Pump Specifications

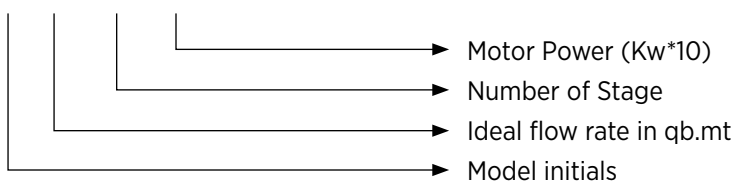
- Pump Body : AISI 304 Stainless Steel
- Impeller & Diffuser : AISI 304 Stainless Steel
- Pump Shaft : AISI 420 Stainless Steel
- Mechanical Seal : Carbon / Ceramic / EPDM

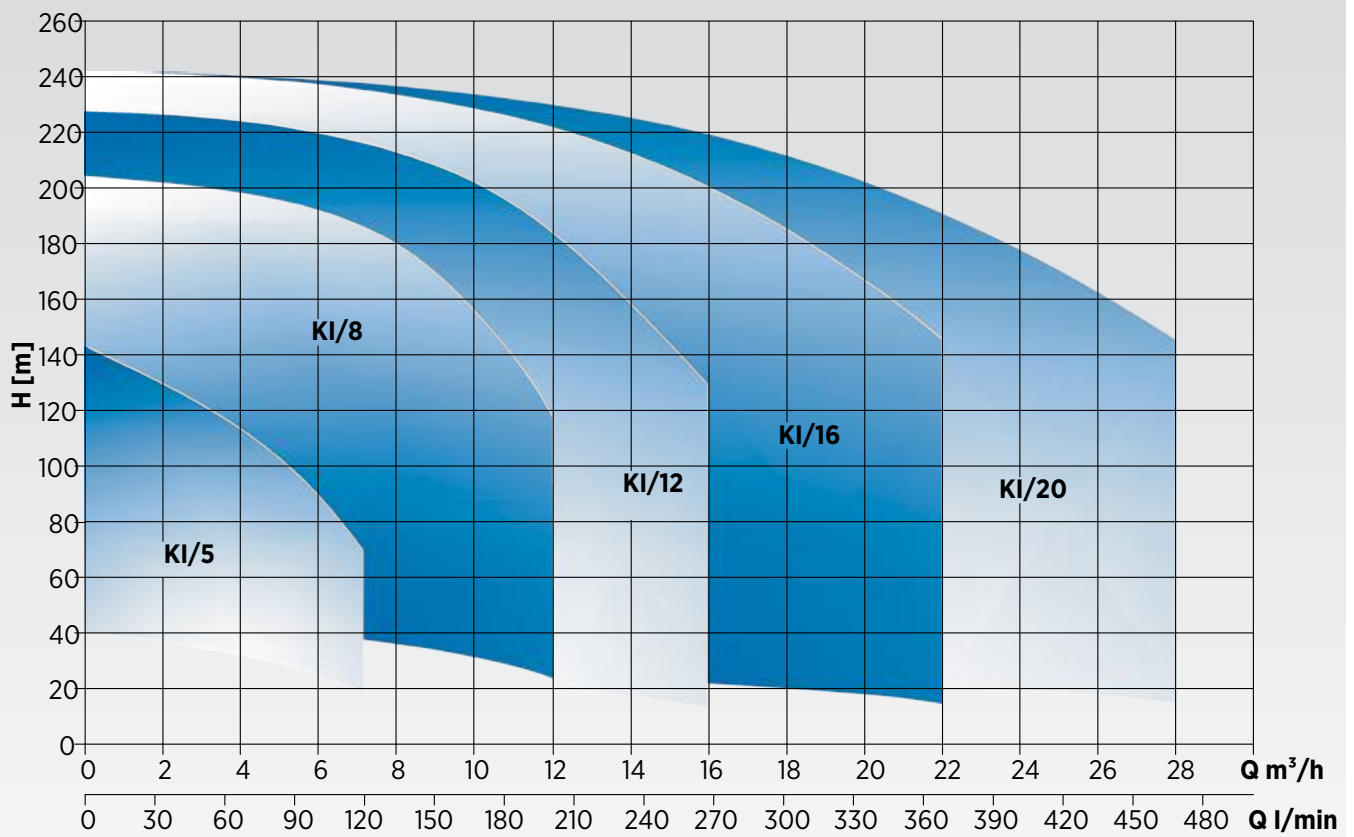
Technical Specifications

- Maximum Flow : 28 m³/h
- Maximum Pressure : 240 mwc
- Inlet-Outlet Diameter : DN25 & DN50
- Pressure Class : PN25
- Max. Ambient Temperature : 40°C
- Fluid Temperature : 0 - 100°C
- Fluid Property : Clean, solid particle-free, chemically neutral water
- Motor Speed : 2900 rpm
- Network Connection : 3*380V - 50 Hz
- Motor Power : 0,75 - 18,5 Kw
- Protection Class : IP55
- Insulation Class : F

Identification Code

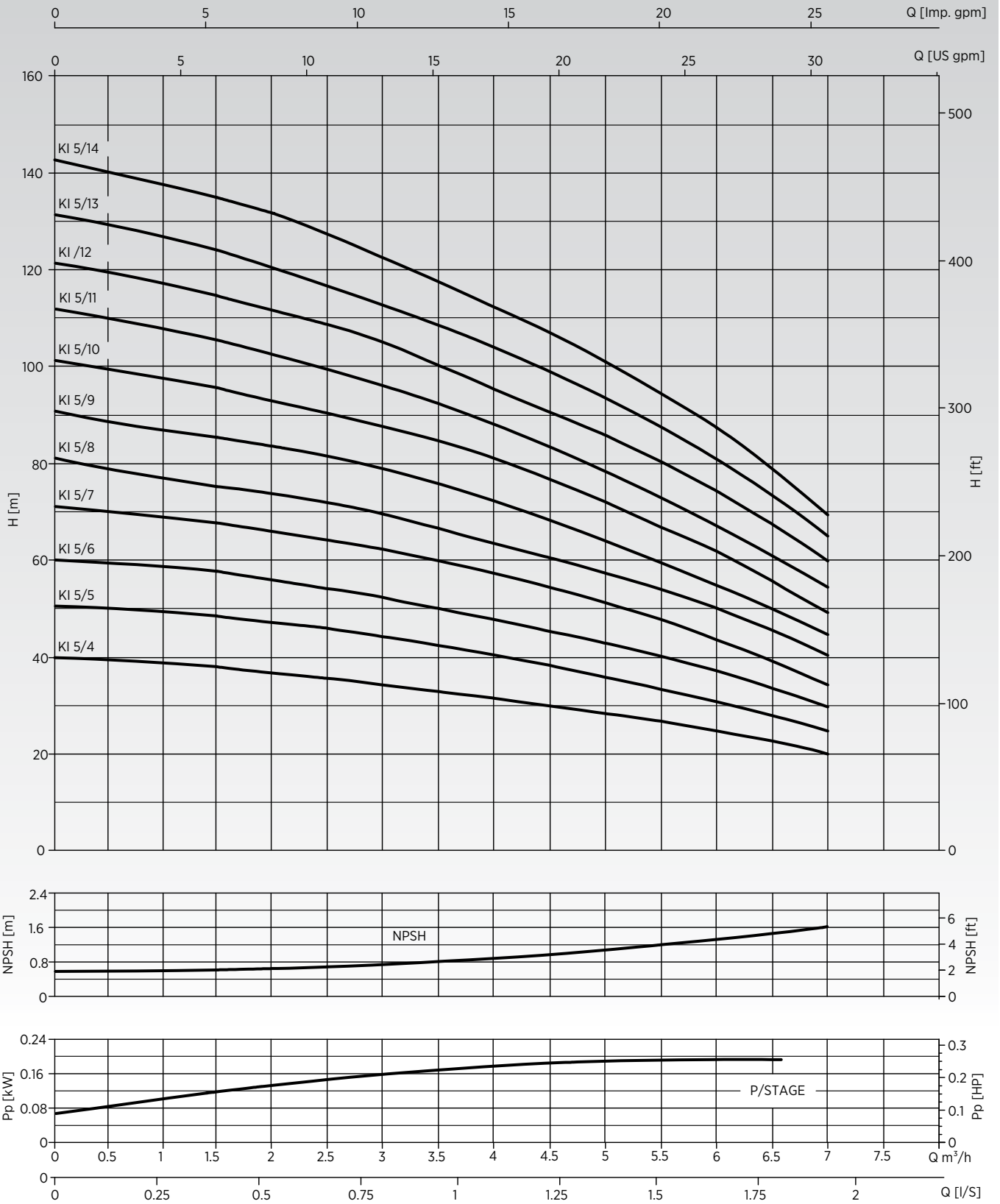
KI 5 / 11 / 22



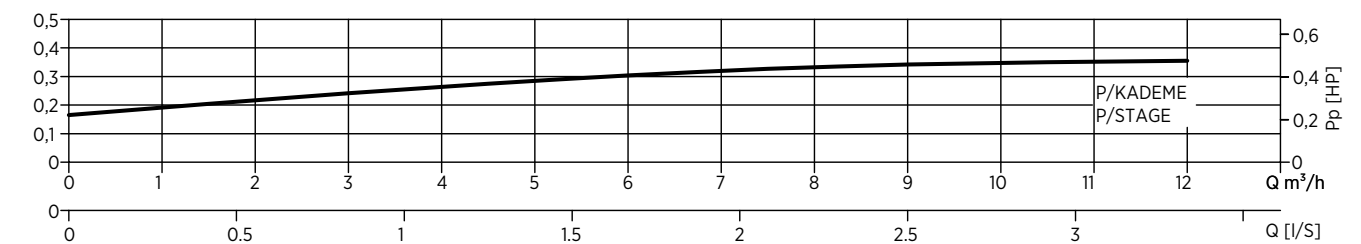
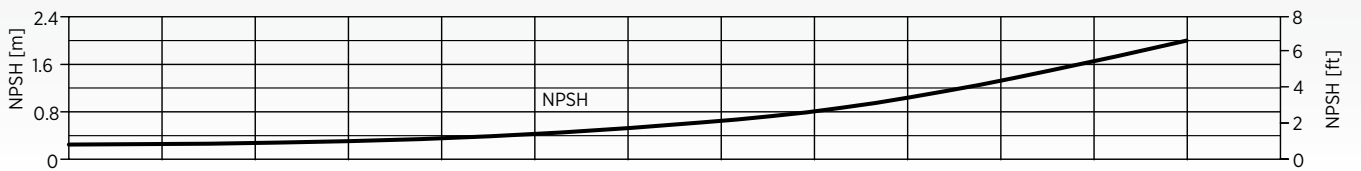
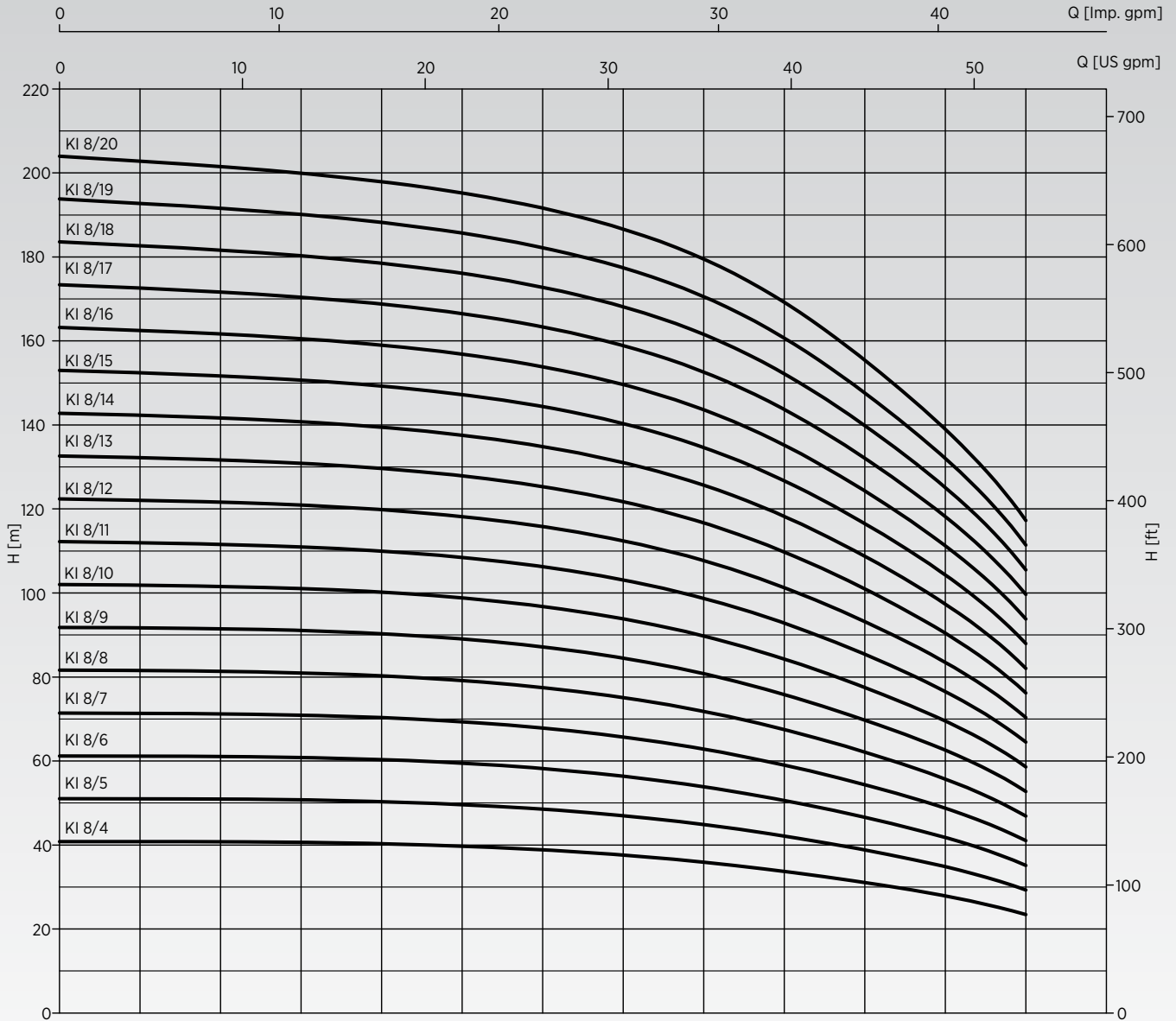


KI Series Performance Curves

KI 5 Series

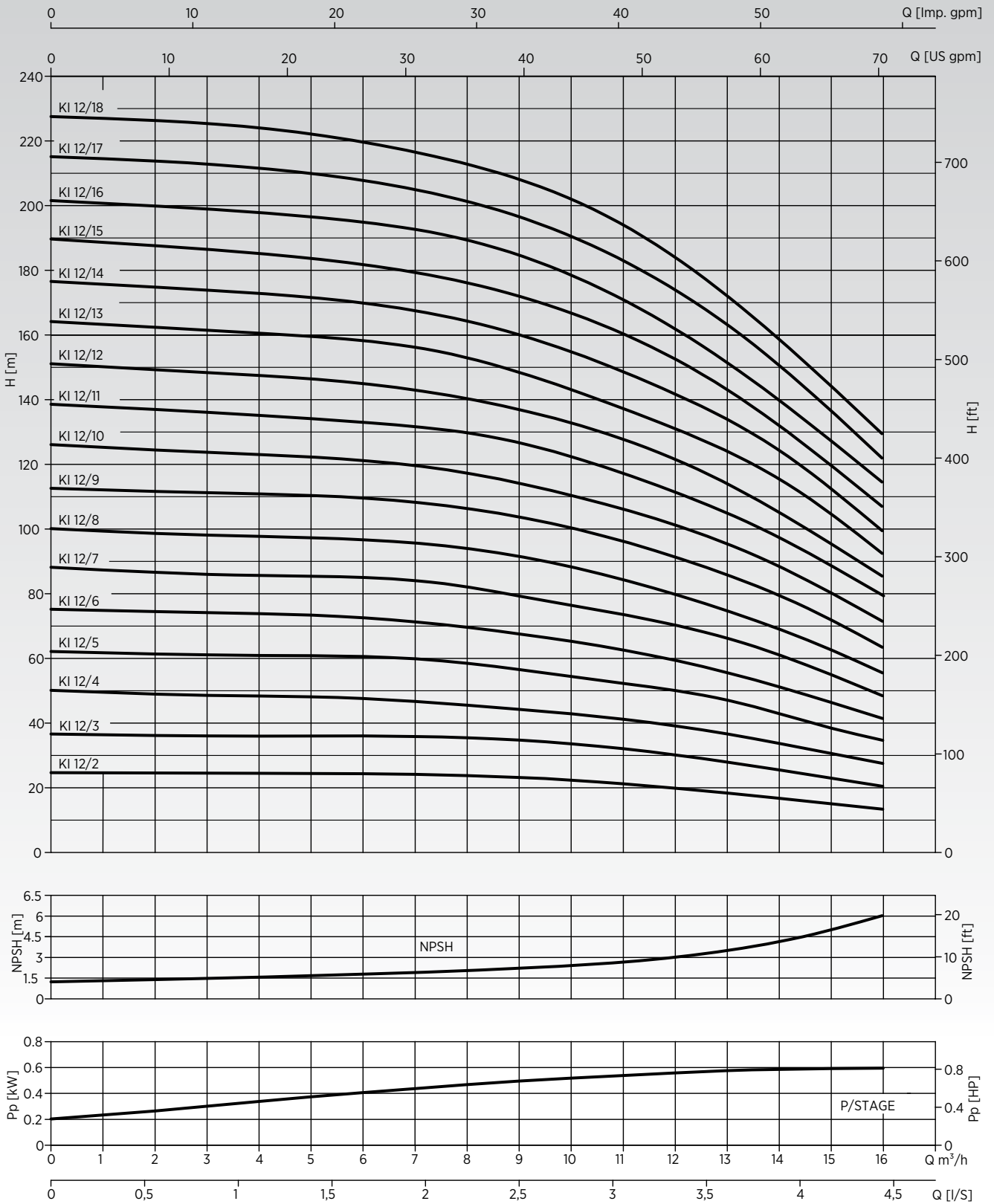


KI 8 Series

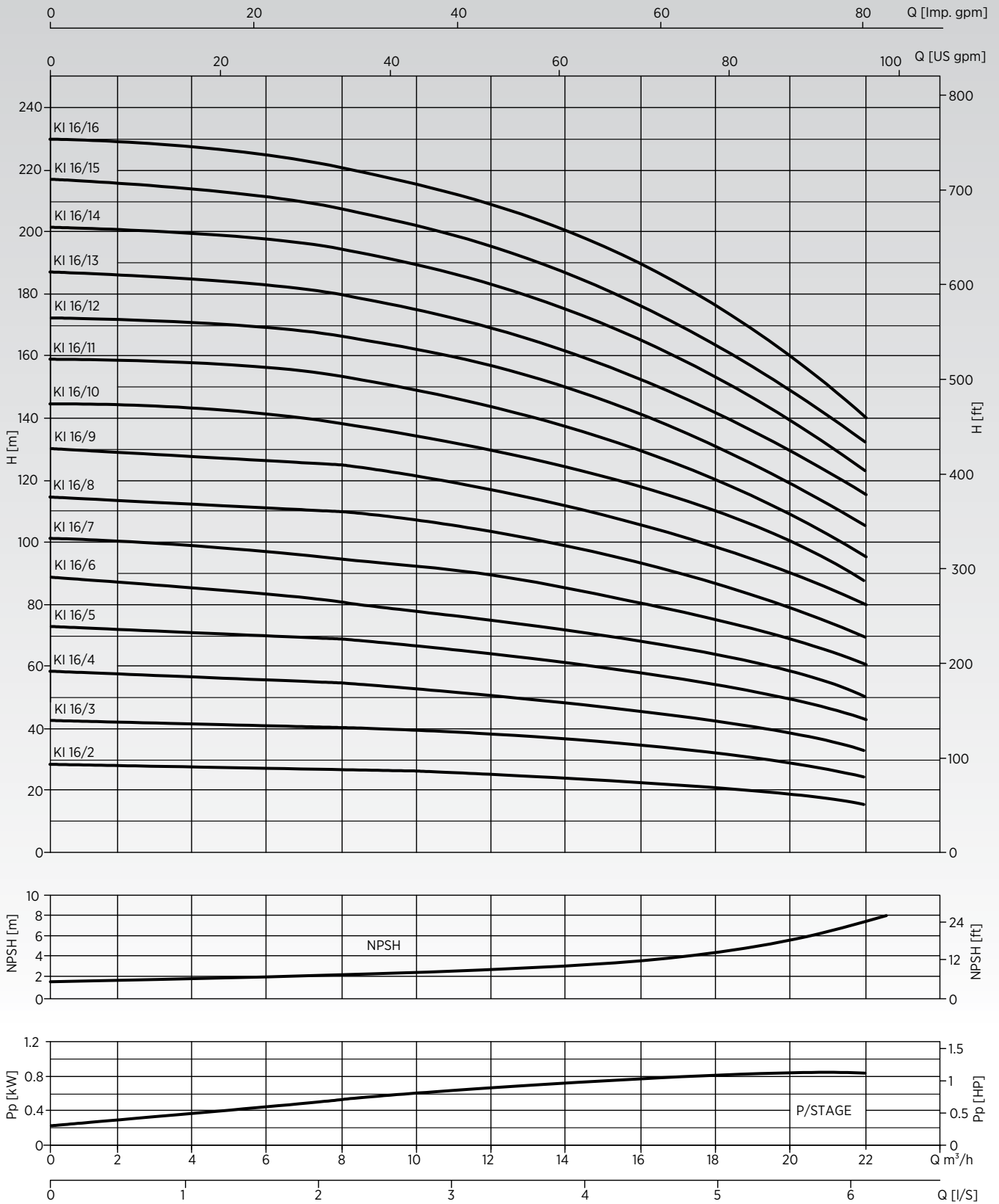


KI Series Performance Curves

KI 12 Series

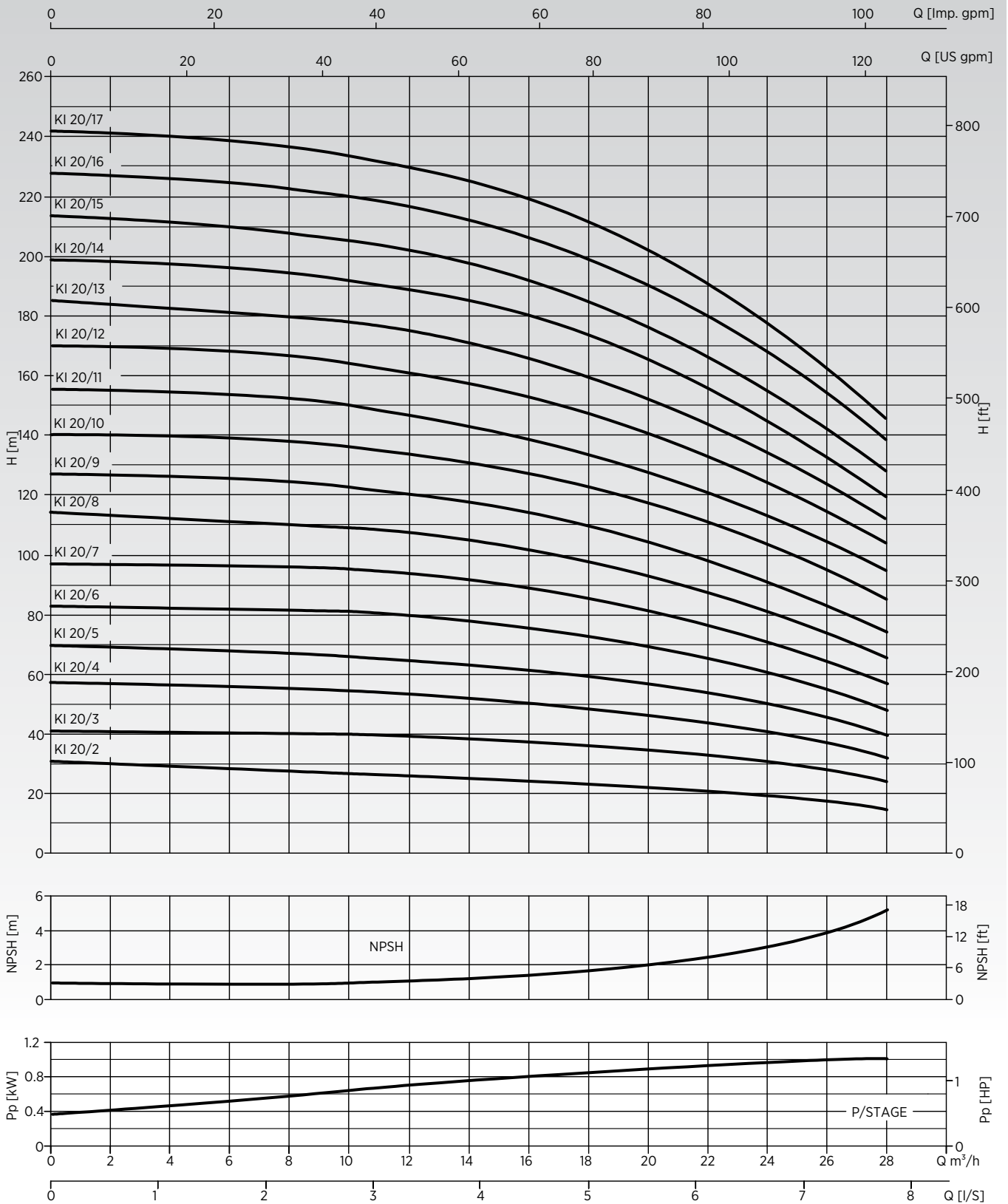


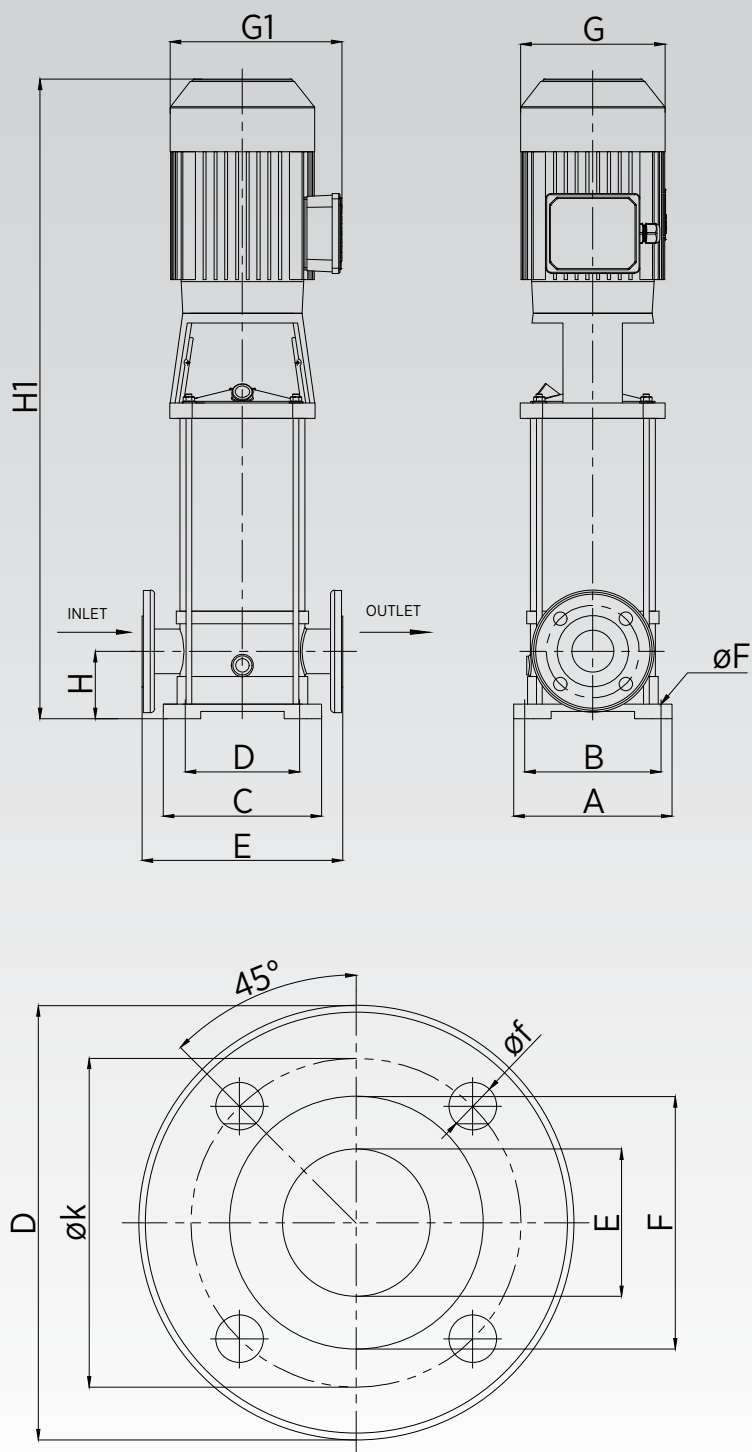
KI 16 Series



KI Series Performance Curves

KI 20 Series





TYPE	DIMENSIONS					
	D	øk	E	F	øf	Hole Number
KI 5	115	85	27	50	14	4
KI 8	165	125	55	95	18	4
KI 12	165	125	55	95	18	4
KI 16	165	125	55	95	18	4
KI 20	165	125	55	95	18	4

KI Series Dimensions

TYPE	DIMENSIONS											
	INLET	OUTLET	A	B	C	D	E	ØF	H	H1	G	G1
KI 5/4-0,75	DN25	DN25	190	160	147	90	225	10	69	562	156	196
KI 5/5-11										589		
KI 5/6-11										616		
KI 5/7-15										698	176	216
KI 5/8-15										725		
KI 5/9-22										752		
KI 5/10-22										779		
KI 5/11-22										806		
KI 5/12-22										833		
KI 5/13-30										902	194	231
KI 5/14-30	926											
TYPE	DIMENSIONS											
INLET	OUTLET	A	B	C	D	E	ØF	H	H1	G	G1	
KI 8/4-15	DN50	DN50	223	180	176	100	270	13	92	687	176	216
KI 8/5-22										717		
KI 8/6-22										747		
KI 8/7-30										777	194	231
KI 8/8-30										849		
KI 8/9-40										879		
KI 8/10-40										909		
KI 8/11-40										939		
KI 8/12-55										969		
KI 8/13-55										1117	300	318
KI 8/14-55	1147											
KI 8/15-55	1177											
KI 8/16-75	1207											
KI 8/17-75	1237											
KI 8/18-75	1267											
KI 8/19-75	1297											
KI 8/20-75	1327											
TYPE	DIMENSIONS											
INLET	OUTLET	A	B	C	D	E	ØF	H	H1	G	G1	
KI 12/2-15	DN50	DN50	223	180	176	100	270	13	92	627	176	216
KI 12/3-22										657		
KI 12/4-30										729		
KI 12/5-30										759	194	231
KI 12/6-40										789		
KI 12/7-55										937		
KI 12/8-55										967		
KI 12/9-55										997		
KI 12/10-75										1027		
KI 12/11-75										1057	300	318
KI 12/12-75	1087											
KI 12/13-110	1117											
KI 12/14-110	1147											
KI 12/15-110	1177											
KI 12/16-110	1207											
KI 12/17-110	1237											
KI 12/18-110	1267											
TYPE	DIMENSIONS											
INLET	OUTLET	A	B	C	D	E	ØF	H	H1	G	G1	
KI 16/2-22	DN50	DN50	223	180	176	100	270	13	92	641	175	215
KI 16/3-30										728	195	230
KI 16/4-40										772		
KI 16/5-55										936		
KI 16/6-55										981	300	320
KI 16/7-75										1026		
KI 16/8-75										1071		
KI 16/9-75										1116		
KI 16/10-110										1161		
KI 16/11-110										1206		
KI 16/12-110	1251	300	400									
KI 16/13-150	1296											
KI 16/14-150	1341											
KI 16/15-150	1286											
KI 16/16-150	1431											
TYPE	DIMENSIONS											
INLET	OUTLET	A	B	C	D	E	ØF	H	H1	G	G1	
KI 20/2-22	DN50	DN50	223	180	176	100	270	13	92	641	176	216
KI 20/3-40										728	194	231
KI 20/4-55										891		
KI 20/5-55										936		
KI 20/6-75										981	310	318
KI 20/7-75										1026		
KI 20/8-110										1071		
KI 20/9-110										1116		
KI 20/10-110										1161		
KI 20/11-110										1206		
KI 20/12-150	1357	310	400									
KI 20/13-150	1402											
KI 20/14-150	1447											
KI 20/15-150	1492											
KI 20/16-185	1537											
KI 20/17-185	1582											



Dudullu Organize Sanayi Bölgesi 2. Cadde No: 14
34775 Ümraniye İstanbul / Turkey
Tel : +90 216 561 47 74 (Pbx) • Fax : +90 216 561 47 50
www.etna.com.tr/en • info@etna.com.tr



ETNA®