



Vertical Multistage Pumps



KO ST Series

High quality pumps with compact construction and high efficiency with AISI304 grade stainless steel on all water contact surfaces. Highly preferred with its small footprint in booster systems and connection style as overlaying (inlet at the bottom and outlet at top) occupying space at floor.

Fields of Use

- Pressurized water supply in residential and commercial buildings
- Garden irrigation systems
- As booster pumps in commercial & residential buildings
- Clean water transfer

Pump Specifications

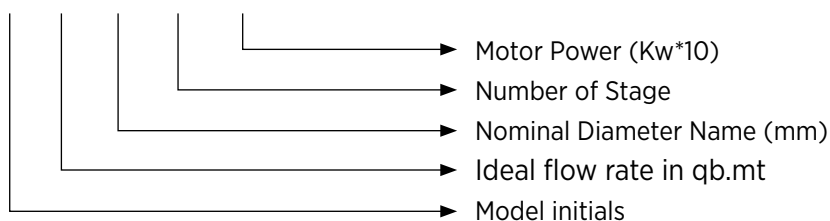
- Pump Body : AISI 304 Stainless Steel
- Impeller & Diffuser : AISI 304 Stainless Steel
- Pump Shaft : AISI 420 Stainless Steel
- Mechanical Seal : Carbon / Ceramic / EPDM

Technical Specifications

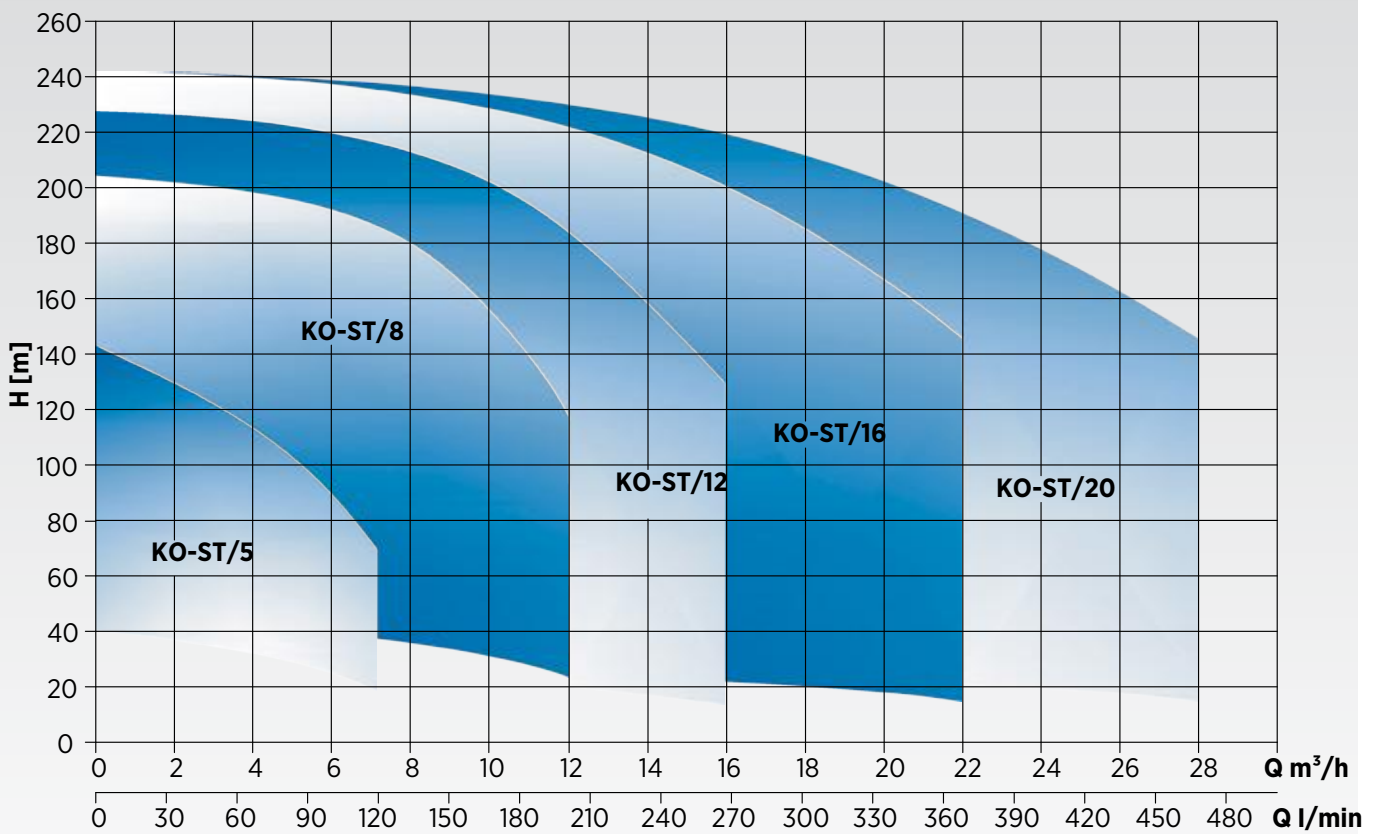
- Maximum Flow : 28 m³/h
- Maximum Pressure : 240 mwc
- Inlet-Outlet Diameter : 1" & 2"
- Pressure Class : PN25
- Max. Ambient Temperature : 40°C
- Fluid Temperature : 0 - 100°C
- Fluid Property : Clean, solid particle-free, chemically neutral water
- Motor Speed : 2900 rpm
- Network Connection : 3*380V, 50Hz
- Motor Power : 0,75 - 18,5 Kw
- Protection Class : IP55
- Insulation Class : F

Identification Code

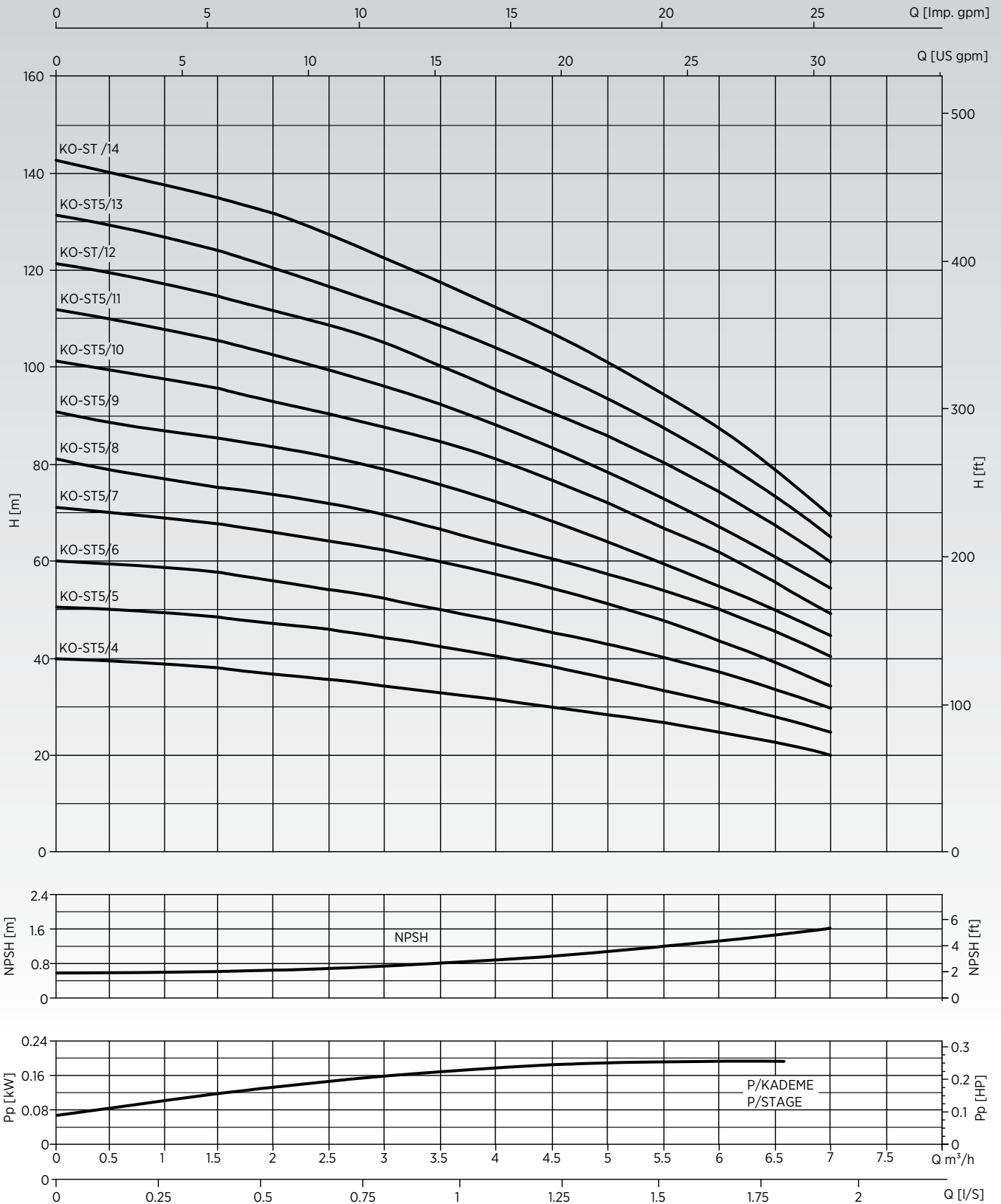
KO ST 12 / 11 / 75



KO ST Series Family Curves

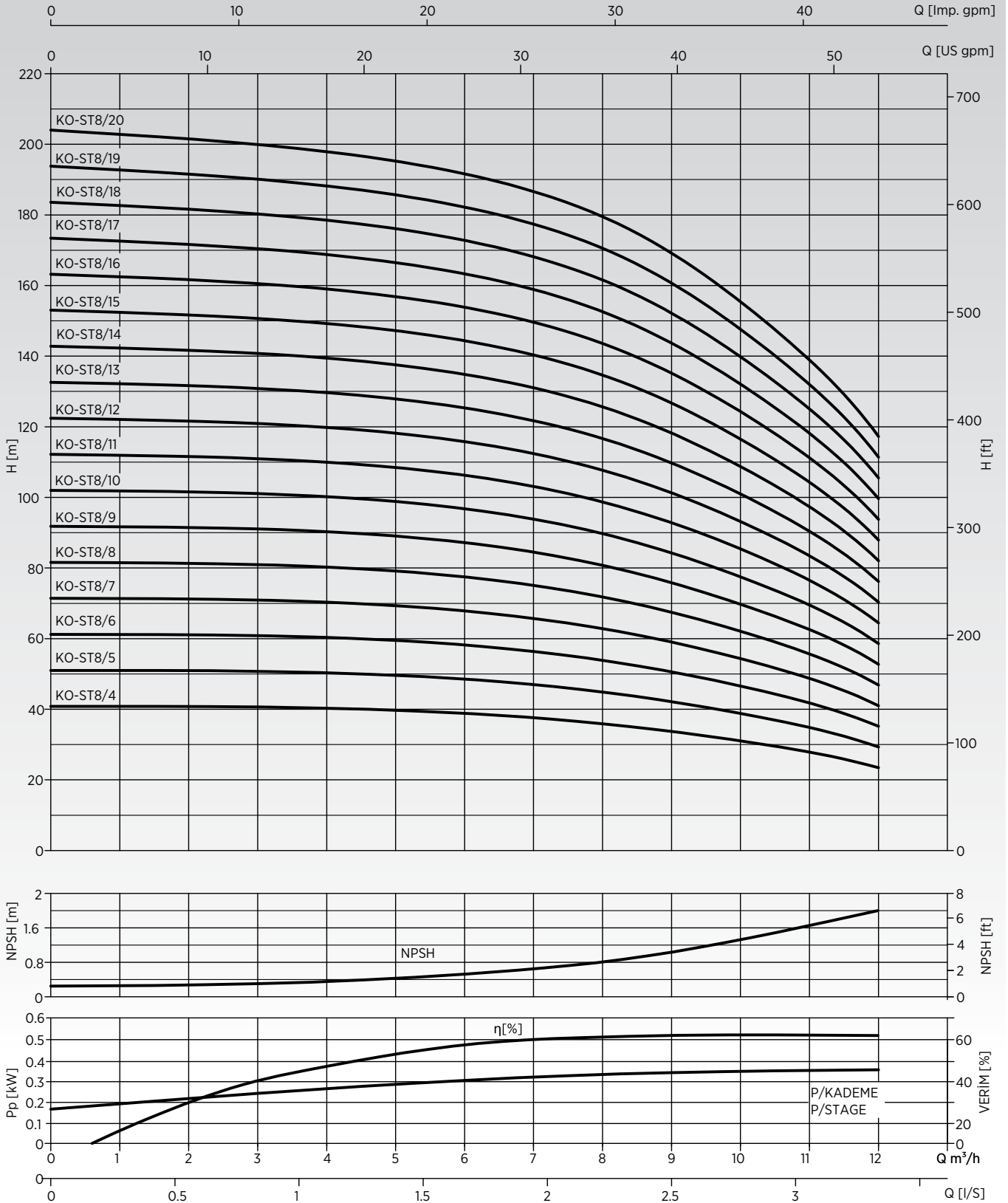


KO ST 5 Series

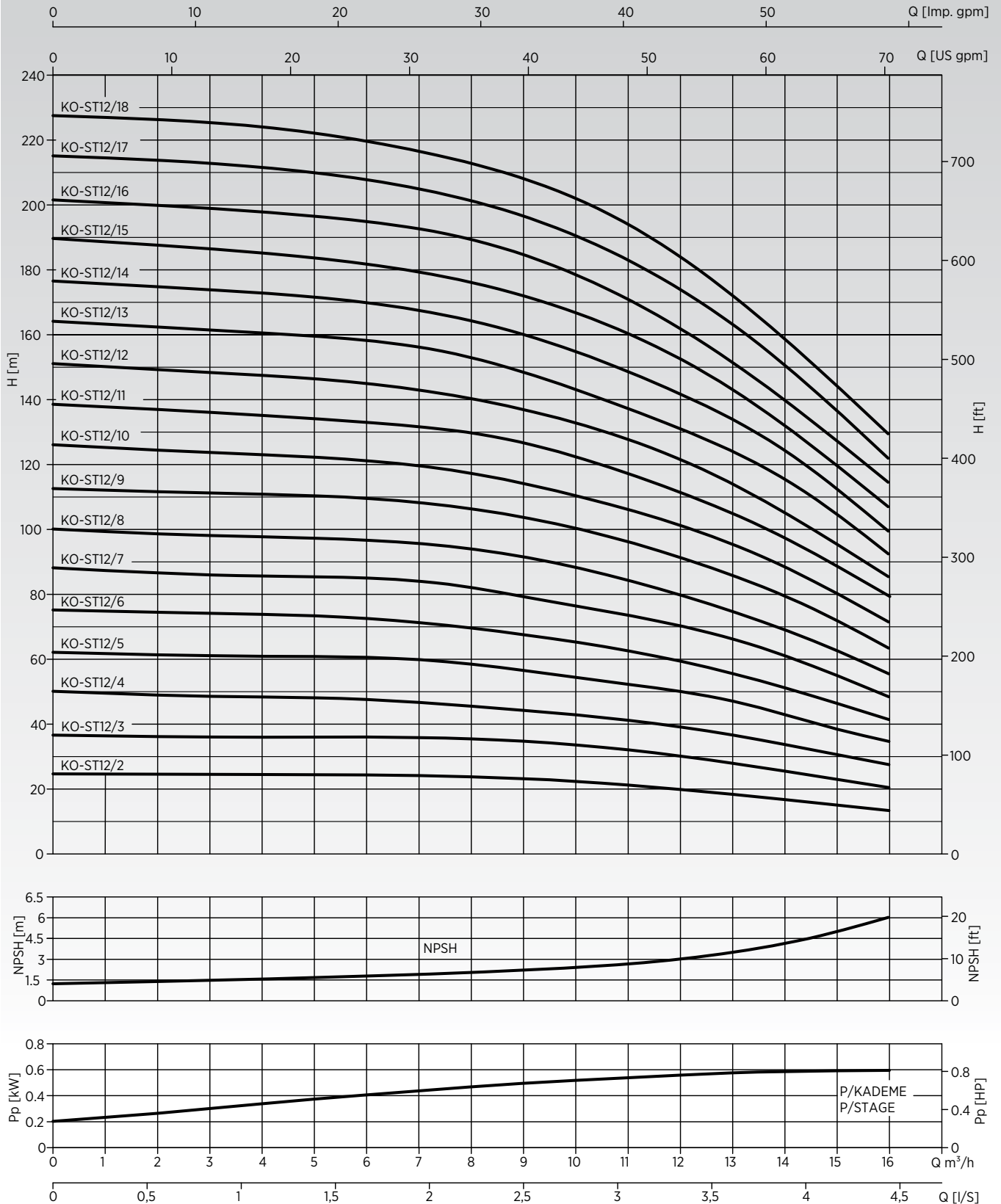


KO ST Series Performance Curves

KO ST 8 Series

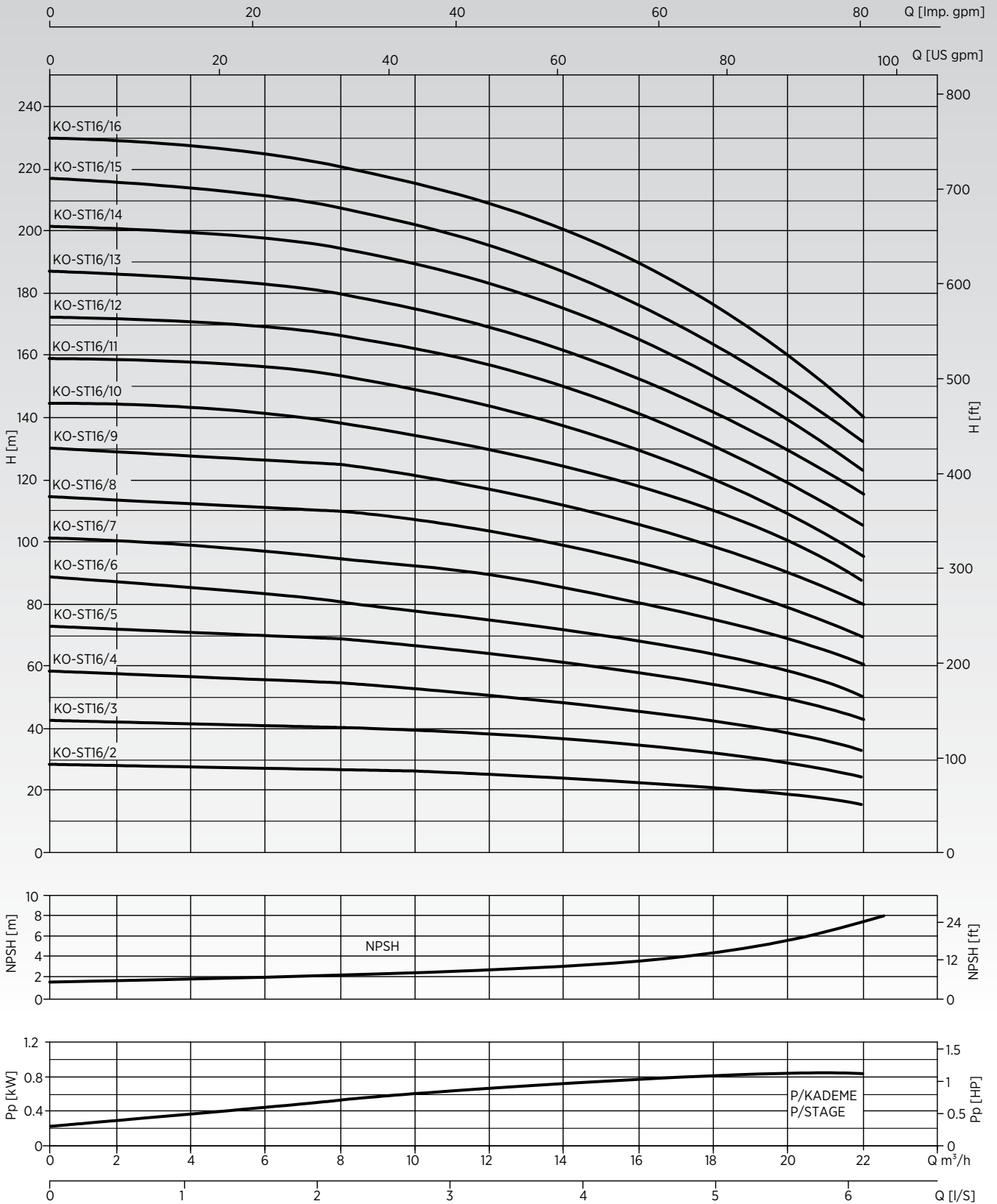


KO ST 12 Series

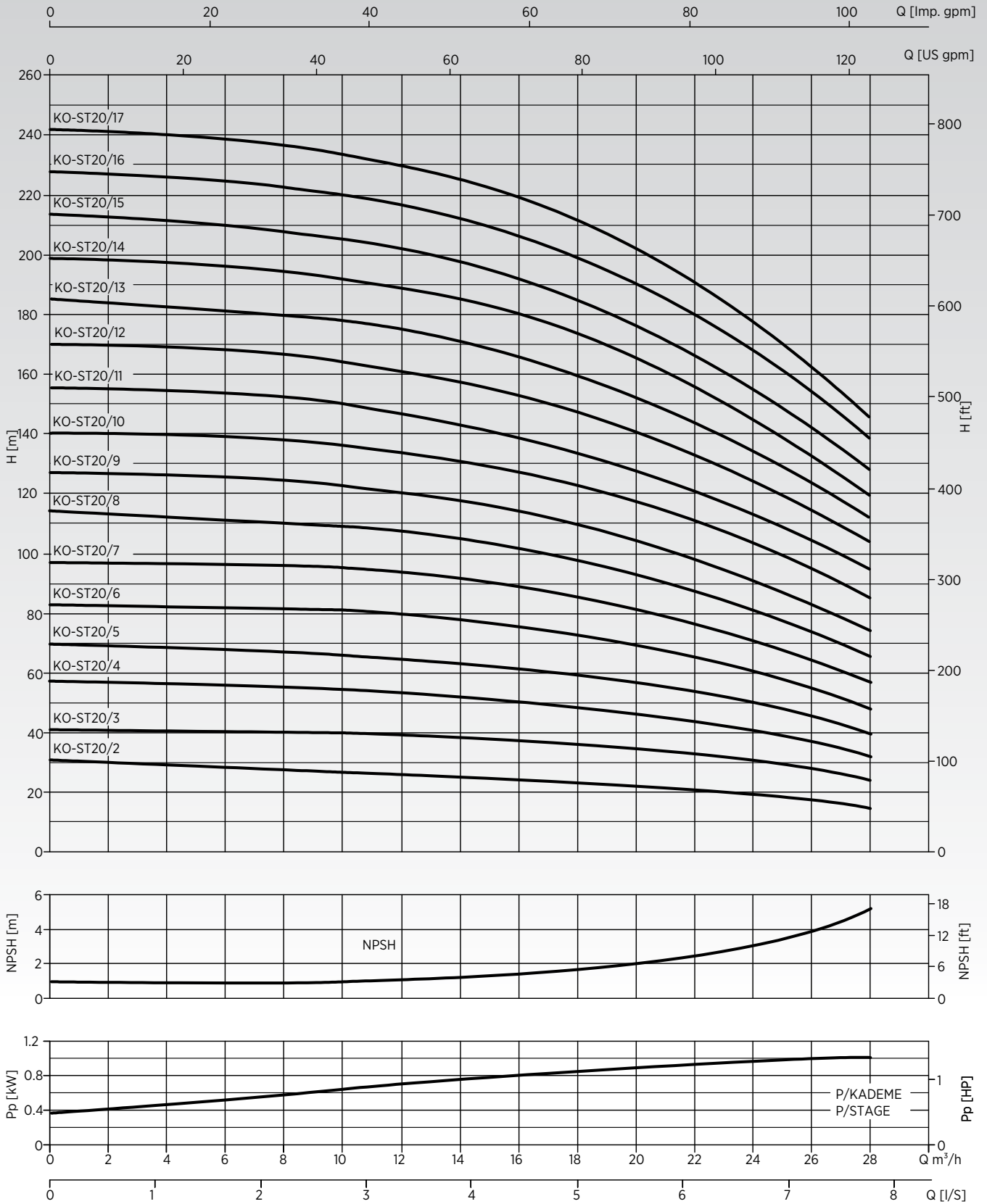


KO ST Series Performance Curves

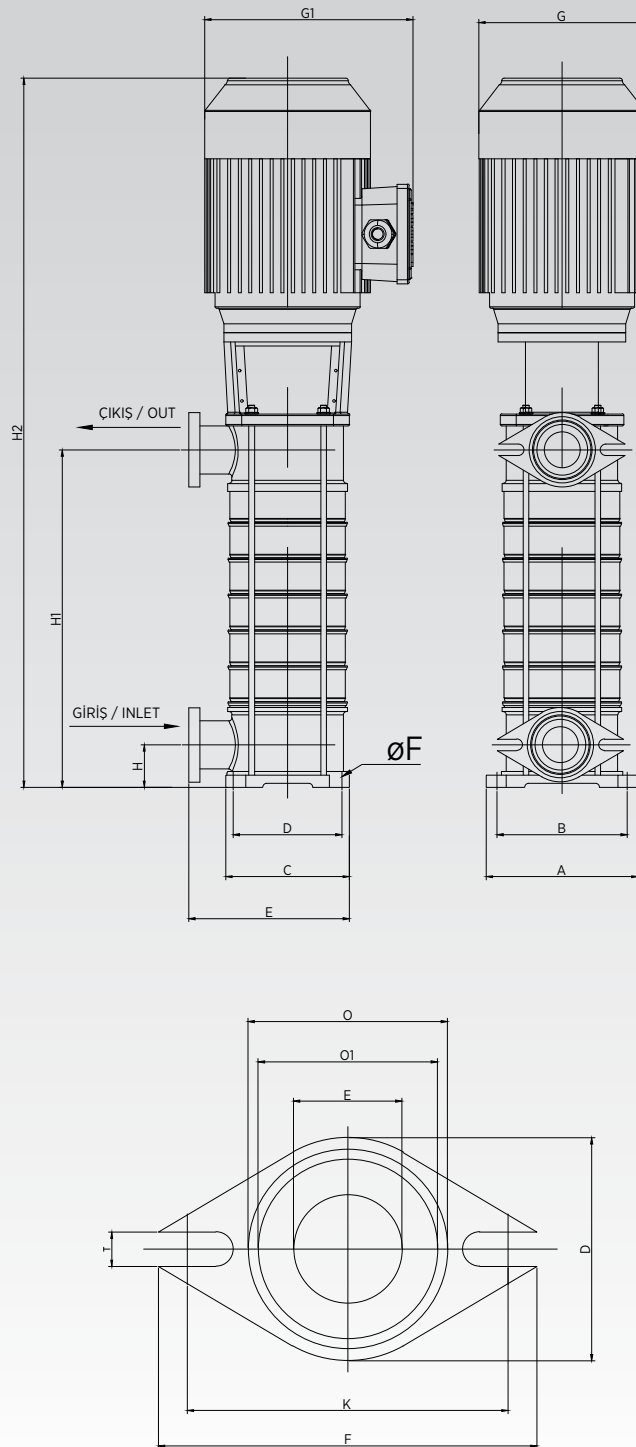
KO ST 16 Series



KO ST 20 Series



KO ST Series Dimensions and Weights



TYPE	DIMENSIONS						
	D	E	K	F	O	O1	B
KO ST - 5	65	27	90	108	51	45	10
KO ST - 8	100	55	120	143	95	85	10
KO ST - 12	100	55	120	143	95	85	10
KO ST - 16	100	55	120	143	95	85	10
KO ST - 20	100	55	120	143	95	85	10

TYPE	DIMENSIONS												
	INLET	OUTLET	A	B	C	D	E	ØF	H	H1	H2	G	G1
KO-ST5/4-0,75	1"	1"	150	126	120	64	145	11	45	209	560	156	196
KO-ST5/5-11										236	587		
KO-ST5/6-11										263	614		
KO-ST5/7-15										290	696	176	214
KO-ST5/8-15										317	723		
KO-ST5/9-22										344	750		
KO-ST5/10-22										371	777		
KO-ST5/11-22										398	804		
KO-ST5/12-22										425	831		
KO-ST5/13-30										457	900		
KO-ST5/14-30										479	927		

TYPE	DIMENSIONS												
	INLET	OUTLET	A	B	C	D	E	ØF	H	H1	H2	G	G1
KO-ST8/4-15	2"	2"	190	156	155	96	215	13	53	239	615	176	214
KO-ST8/5-22										269	690		
KO-ST8/6-22										299	720		
KO-ST8/7-30										329	750	194	231
KO-ST8/8-30										359	780		
KO-ST8/9-40										389	852		
KO-ST8/10-40										419	902		
KO-ST8/11-40										449	932		
KO-ST8/12-55										479	962		
KO-ST8/13-55										509	992		
KO-ST8/14-55										539	1120		
KO-ST8/15-55	569	1150	300	318									
KO-ST8/16-75	599	1180											
KO-ST8/17-75	629	1210											
KO-ST8/18-75	659	1240											
KO-ST8/19-75	689	1270											
KO-ST8/20-75	719	1300											

TYPE	DIMENSIONS												
	INLET	OUTLET	A	B	C	D	E	ØF	H	H1	H2	G	G1
KO-ST12/2-15	2"	2"	190	156	155	96	215	13	53	179	610	156	196
KO-ST12/3-22										209	640		
KO-ST12/4-30										239	670		
KO-ST12/5-30										269	732	194	231
KO-ST12/6-40										299	762		
KO-ST12/7-55										329	792		
KO-ST12/8-55										359	940		
KO-ST12/9-55										399	970		
KO-ST12/10-75										419	1000		
KO-ST12/11-75										449	1030		
KO-ST12/12-75										479	1060		

TYPE	DIMENSIONS												
	INLET	OUTLET	A	B	C	D	E	ØF	H	H1	H2	G	G1
KO-ST16/2-22	2"	2"	190	156	155	96	215	13	53	194	670	176	214
KO-ST16/3-30										239	722	218	254
KO-ST16/4-40										284	768		
KO-ST16/5-55										329	910		
KO-ST16/6-55										374	955	300	318
KO-ST16/7-75										419	1000		
KO-ST16/8-75										464	1045		
KO-ST16/9-75										509	1090		
KO-ST16/10-110										554	1135		
KO-ST16/11-110										599	1180		

TYPE	DIMENSIONS												
	INLET	OUTLET	A	B	C	D	E	ØF	H	H1	H2	G	G1
KO-ST20/2-22	2"	2"	190	156	155	96	215	13	53	194	670	176	214
KO-ST20/3-40										239	722	218	254
KO-ST20/4-55										284	768		
KO-ST20/5-55										329	910		
KO-ST20/6-75										374	955	300	318
KO-ST20/7-75										419	1000		
KO-ST20/8-110										464	1045		
KO-ST20/9-110										509	1090		
KO-ST20/10-110										554	1135		
KO-ST20/11-110										599	1180		



Dudullu Organize Sanayi Bölgesi 2. Cadde No: 14
34775 Ümraniye İstanbul / Turkey
Tel : +90 216 561 47 74 (Pbx) • Fax : +90 216 561 47 50
www.etna.com.tr/en • info@etna.com.tr



ETNA®